

10'X16' HIP ROOF SHED PLAN

FREE STREAMLINED VERSION



Supported & Recommended by our Friends & Partners:

wikiHow

Sarah x Sarah

MOVOTO

'BOUT HOME

eHow

DIFFERENCES BETWEEN OUR FREE & PREMIUM PLANS



vs.



PREMIUM 10'x16' PLAN

- 30+ detailed 3D schematics
- Views from all angles
- Measurements for every part
- Full layouts for every step
- Step-by-step assembly instructions
- Full material / shopping list
- Full cutting list
- PRO-TIPS for every section
- Mobile / Tablet ready
- Designed for newbies and pro's

FREE 10'x16' PLAN

- Basic schematics
- Basic angles
- Basic measurements
- Basic layouts
- Simplified instructions

LEARN MORE ABOUT PREMIUM 10'X16' SHED PLAN BENEFITS

[LEARN MORE!](#)

DISCLAIMER

Howtobuildashed.org is here to help and assist the DIYer. All information / advice is free to use. The information / advice is for general guidance only and whilst every effort is made to ensure that it is correct, it should not be relied upon as accurate. The information / advice contained within this document is intended for persons of no less than 18 years of age. Use of the information / advice contained within this document is at your own risk. It is the sole responsibility of any person(s) using the information / advice contained within this document that their level of competence is appropriate for the task they want to complete. All users of information / advice contained within this document should have all work checked / tested by a professional qualified trades person where applicable. You should be aware of current regulations on buildings, gas, water and electrical works (i.e. Part P) if you have any doubts we would advise you to research further information or contact the appropriate professional body.

LIABILITY

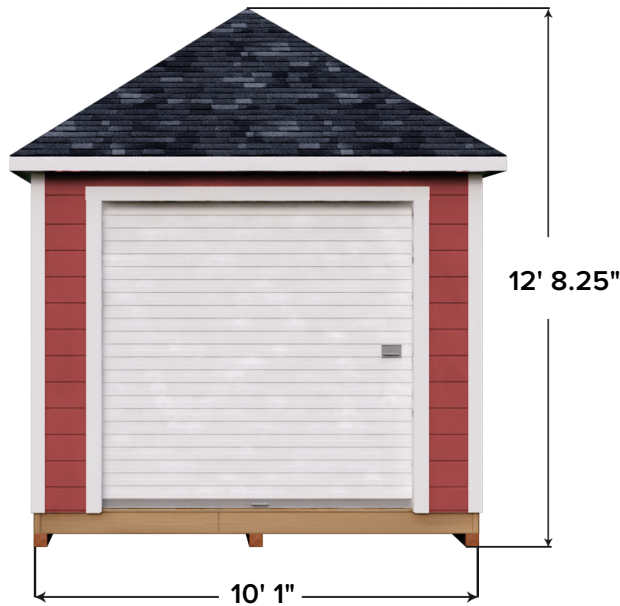
Howtobuildashed.org and individuals associated with the document through ownership and contribution will not accept any liability for any loss, damage, injury or negligence direct or indirect from use of the information / advice contained within this document. Any dispute arising from use of this document or disclaimer will be decided by the US courts under the relevant US law.

COPYRIGHT

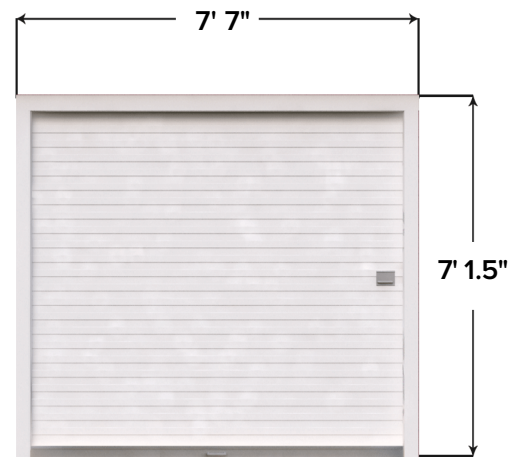
The contents of these and other pages (graphics, text and arrangement) are owned unless otherwise noted by Howtobuildashed.org and no part of this document may be reproduced without written permission of the owners Howtobuildashed.org Information may be stored on computer for personal use only, not for presentation or publication.

1 BASIC OVERVIEW AND DIMENSIONS

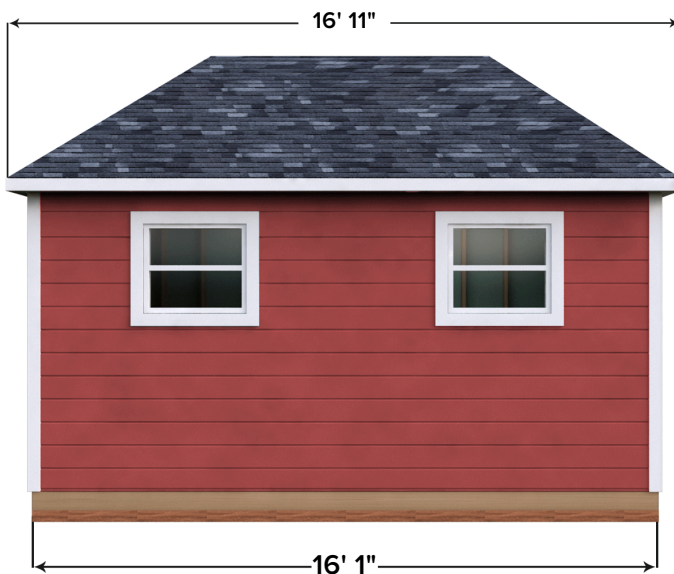
This 10'x16' shed is massive and exquisite, making it the ideal shed for leisure activities as well as storing your gardening supplies. The overall height of this shed is 12feet and 8.25 inches with the width being 8 feet and 1 inch. There is a huge door in the right with a width of 7 feet and height of 7 feet. The side width of the shed is 16 feet and 1 inch with the roof being 16 feet and 11 inches in width. There is a mid-size window on the front. Note that the windows and doors need to be either separately built or purchased and therefore will not be included in this shed building plan.



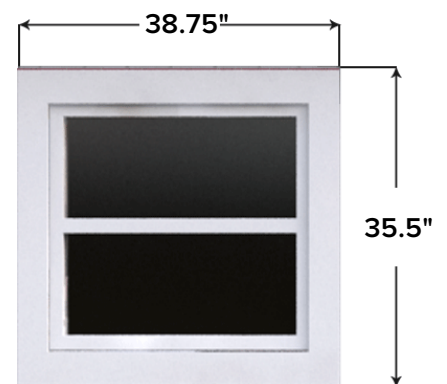
FRONT VIEW



DOOR



SIDE VIEW



WINDOW

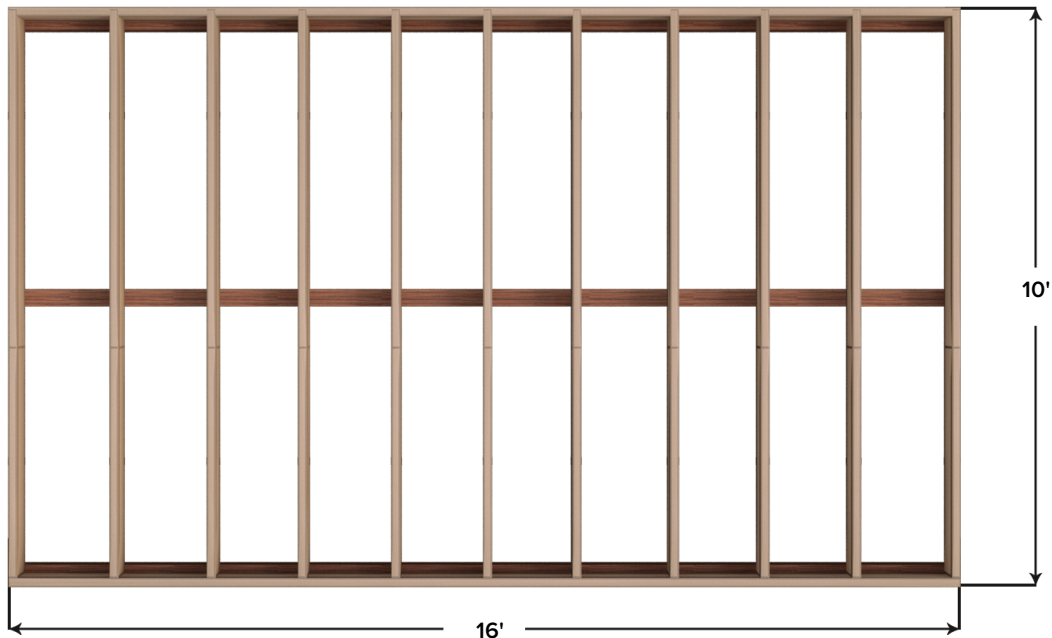
NOTE

Use old doors and windows to save money. Follow manufacturer's instructions to accurately install the doors and windows.

2 FOUNDATION AND FLOOR

The first phase is to build the foundation and the floor. Make sure the foundation has all the joists and skids fit perfectly with each other. Any complication in the foundation will compromise the entire structure of the shed since the foundation will be bearing the entire weight. Use pressure heated timber skids and build a foundation base of 10 feet width and 16 feet length as shown in the figure.

Once the foundation is developed, use $\frac{3}{4}$ inches thick tongue and groove plywood for the floor. Use L joints and skids to assemble the parts together. Use galvanized nails to fit skids and joists together.



FOUNDATION BASE



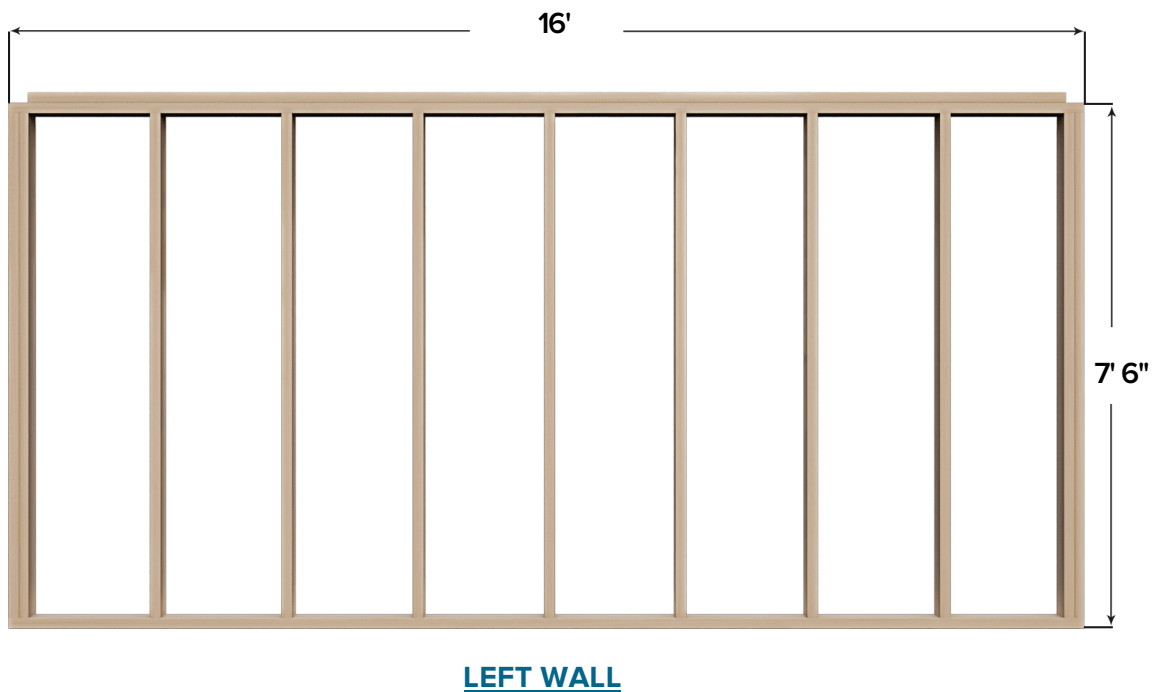
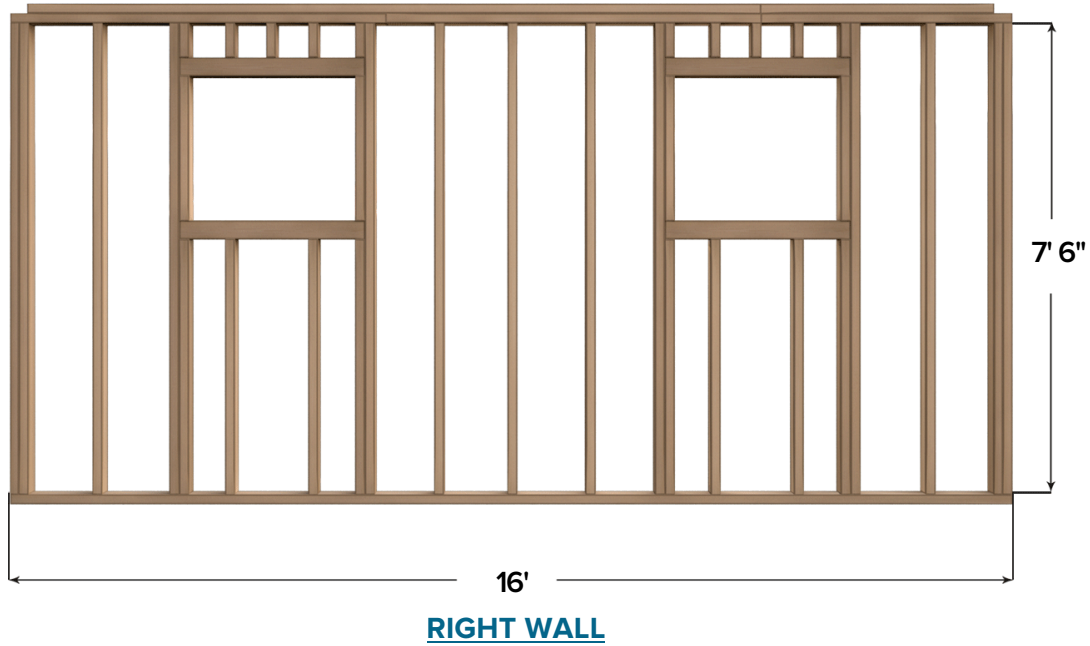
FLOOR

NOTE

Buy per-designed joists and skids if you are new to building sheds. This way, you will reduce the chances of any complications in sizing and spacing.

3 WALL STRUCTURES

Once the floor and the foundation is built, you will start building the right and the left wall. Use pressure heated timber to build the walls with a width of 16 feet and height of 7 feet and 6 inches as shown in the figure. Leave out space for the window and the door in the right wall. Use L joints, skids and joists to assemble the parts together. Once the structures are built, install T1-11 on the walls with galvanized nails and exterior screws.

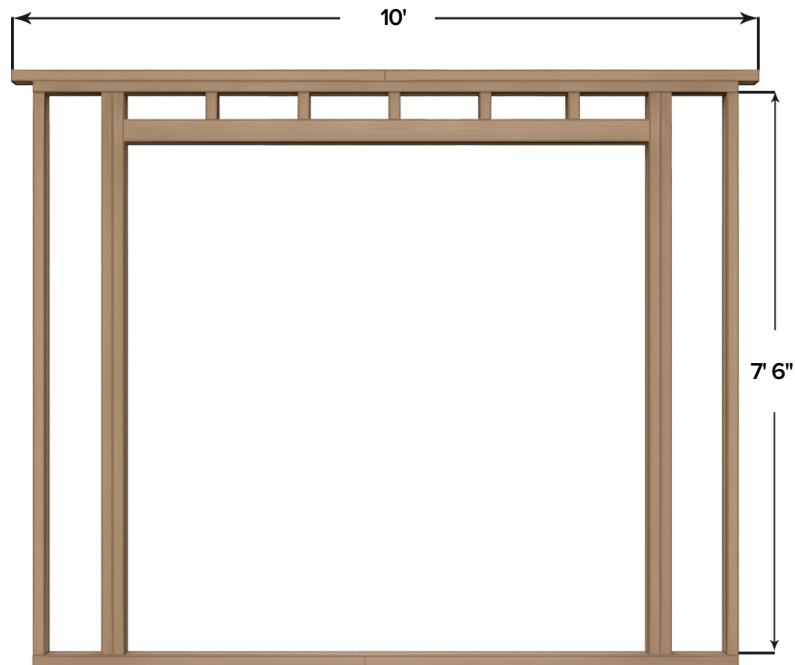


NOTE

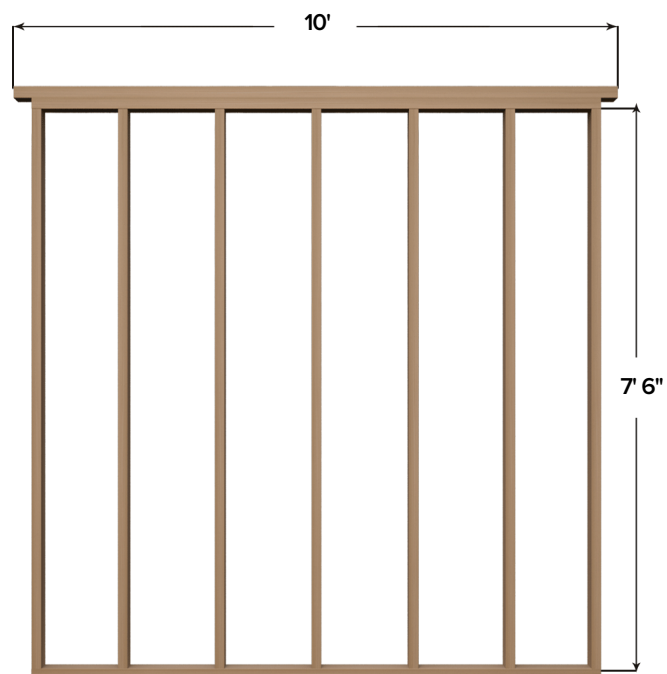
Add self-adhering flashing on the bottom edges of the windows before installing T1-11.

4 WALL STRUCTURES

After the right and the left wall, you will start building the front and the back wall. The difference in the width is to accommodate the roof. The height should be 7 feet and 6 inches. Use pressure heated timber for building the structures. Use L joints, skids and joists to assemble the parts together. Once the structures are built, install T1-11 with galvanized nails and exterior screws to finish them.



FRONT WALL



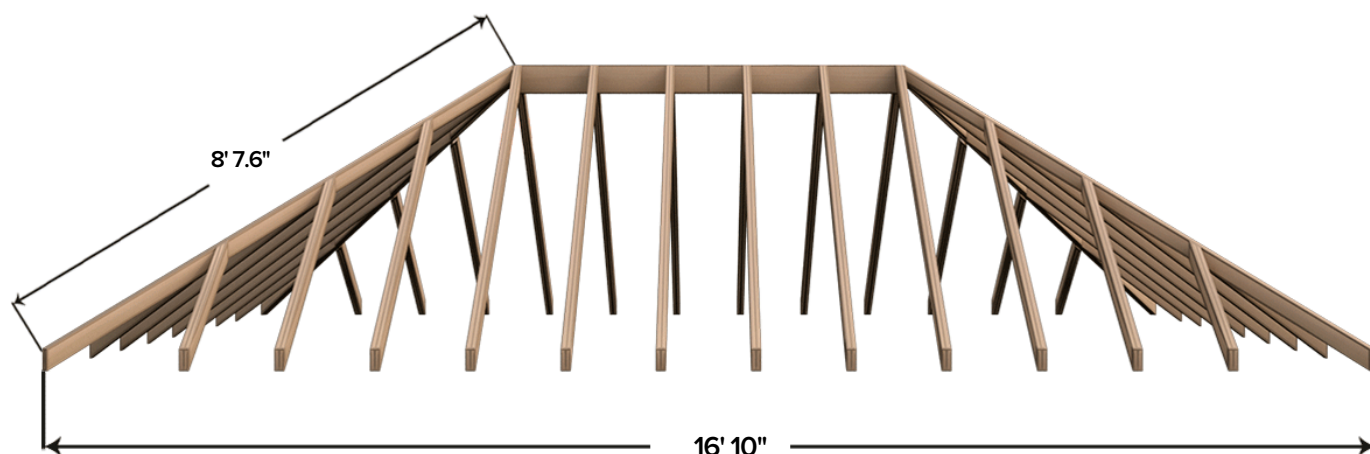
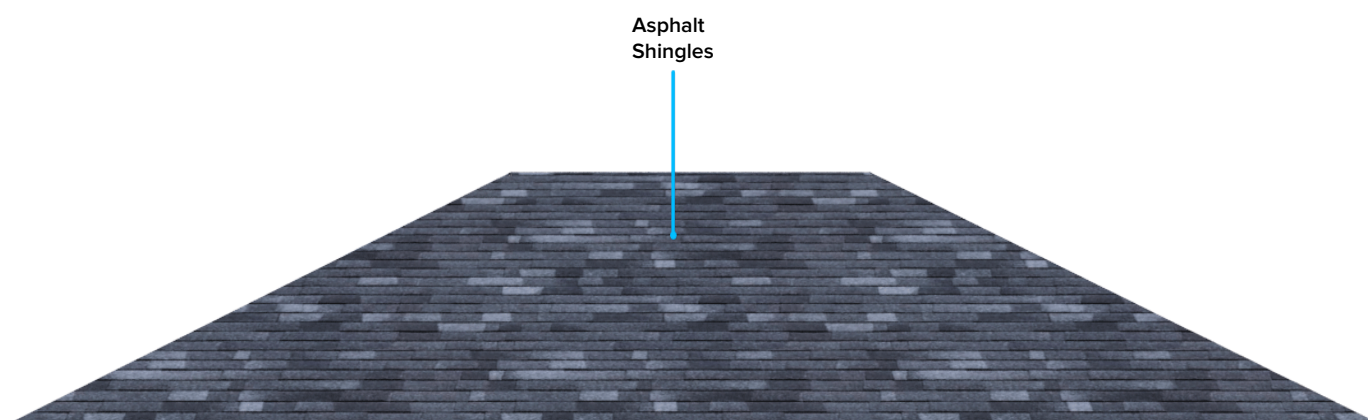
BACK WALL

NOTE

Make sure the edges of T1-11 do not overlap each other as this will compromise the functioning and appearance of the T1-11.

5 ROOF SECTION

Once all the walls are built, you will start working on the roof. Note that roofing is a complex and strenuous task. Therefore, it is recommended to have additional help while working on the roof. Once rafters built, you will spread them over a width of 16 feet 10 inches as shown in the figure. Use L joints and skids to firmly attach the rafters. Use T1-11 on the two outer most rafters of the roof with galvanized nails. Start installing asphalt shingles once the roof is built. Use old asphalt shingles to save money.



NOTE

Follow the manufacturer's instructions carefully while installing the shingles. Get additional help for the roofing task to safely get the job done.

Supported & Recommended by our Friends & Partners:

wikiHow

MOVOTO

eHow

Sarah x Sarah

'BOUT HOME



Wait no more! Click here to learn more about our premium 10'x16' shed plan and start building your shed today!



PREMIUM PLAN INCLUDES:

- 30+ detailed 3D schematics
- Views from all angles
- Measurements for every part
- Full layouts for every step
- Step-by-step assembly instructions
- Full material / shopping list
- Full cutting list
- PRO-TIPS for every section
- Mobile / Tablet ready
- Designed for newbies and pro's

LEARN MORE!