

# 14'X20'

## LEAN TO SHED PLAN

**FREE STREAMLINED VERSION**



Supported & Recommended by our Friends & Partners:

**wikiHow**

Sarah x Sarah

**MOVOTO**

'BOUT HOME

**eHow**

# DIFFERENCES BETWEEN OUR FREE & PREMIUM PLANS



**VS.**



## **PREMIUM 14'x20' PLAN**

- 30+ detailed 3D schematics
- Views from all angles
- Measurements for every part
- Full layouts for every step
- Step-by-step assembly instructions
- Full material / shopping list
- Full cutting list
- PRO-TIPS for every section
- Mobile / Tablet ready
- Designed for newbies and pro's

## **FREE 14'x20' PLAN**

- Basic schematics
- Basic angles
- Basic measurements
- Basic layouts
- Simplified instructions

## **LEARN MORE ABOUT PREMIUM 14'X20' SHED PLAN BENEFITS**

---

[LEARN MORE!](#)

---

# **DISCLAIMER**

Howtobuildashed.org is here to help and assist the DIYer. All information / advice is free to use. The information / advice is for general guidance only and whilst every effort is made to ensure that it is correct, it should not be relied upon as accurate. The information / advice contained within this document is intended for persons of no less than 18 years of age. Use of the information / advice contained within this document is at your own risk. It is the sole responsibility of any person(s) using the information / advice contained within this document that their level of competence is appropriate for the task they want to complete. All users of information / advice contained within this document should have all work checked / tested by a professional qualified trades person where applicable. You should be aware of current regulations on buildings, gas, water and electrical works (i.e. Part P) if you have any doubts we would advise you to research further information or contact the appropriate professional body.

## **LIABILITY**

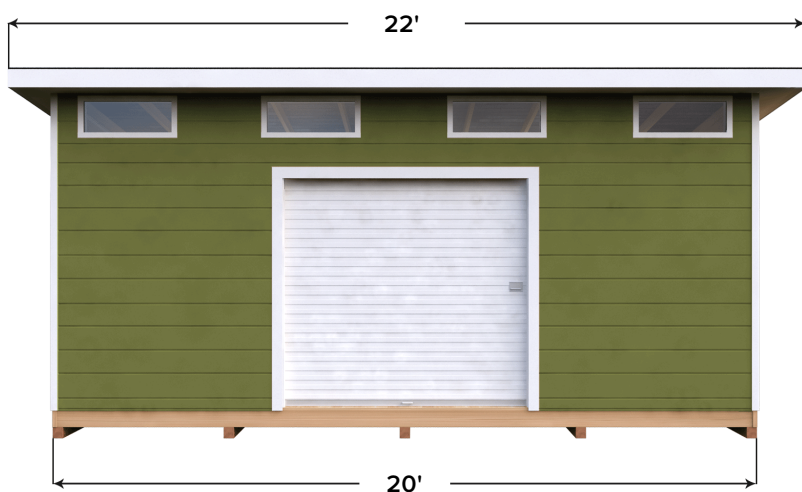
Howtobuildashed.org and individuals associated with the document through ownership and contribution will not accept any liability for any loss, damage, injury or negligence direct or indirect from use of the information / advice contained within this document. Any dispute arising from use of this document or disclaimer will be decided by the US courts under the relevant US law.

## **COPYRIGHT**

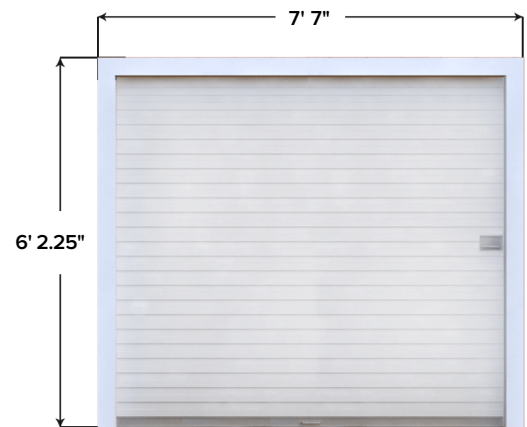
The contents of these and other pages (graphics, text and arrangement) are owned unless otherwise noted by Howtobuildashed.org and no part of this document may be reproduced without written permission of the owners Howtobuildashed.org Information may be stored on computer for personal use only, not for presentation or publication.

# 1 BASIC OVERVIEW AND DIMENSIONS

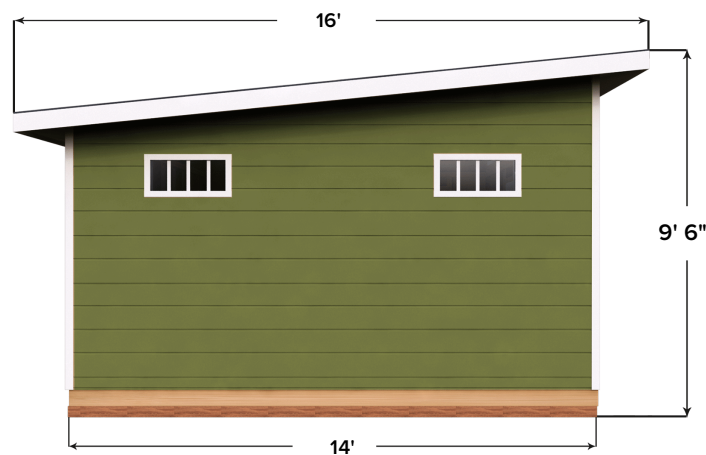
This 14x20 shed offers all the space you will ever need to store your hardware and tools, and it is great for things like backyard storage and office space. This shed has a pitched roof, so water runs off it from the back and it can be placed against an exterior wall or standalone. It has a spacious garage door for wheeling tools into it, and windows feature on the front and sides of the shed to let plenty of natural light in. With a depth or width of 22' including overhang, and 20' when measured from the base, this is a large shed that should take several days to build at least. Our premium 14x20 shed plan offers detailed illustrations and step-by-step instructions for building this shed, and a comprehensive materials list for you to shop against.



FRONT VIEW



DOOR



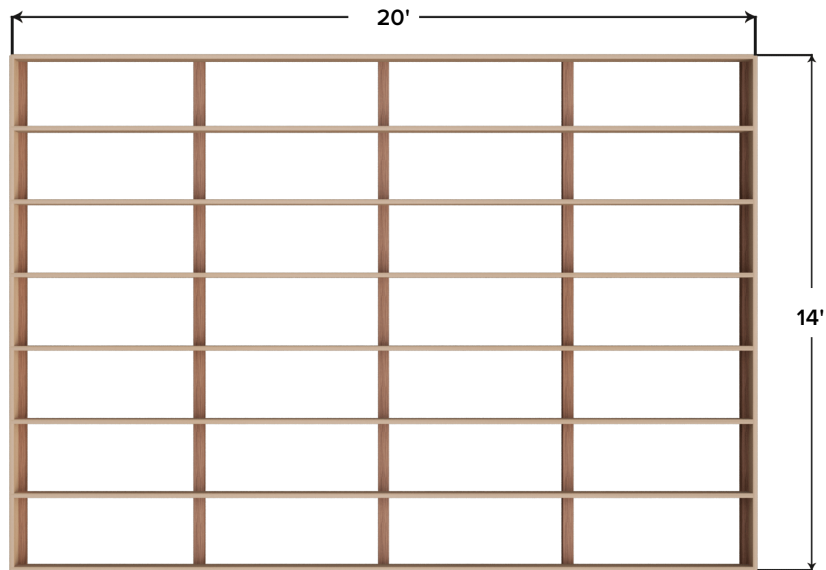
SIDE VIEW

## NOTE

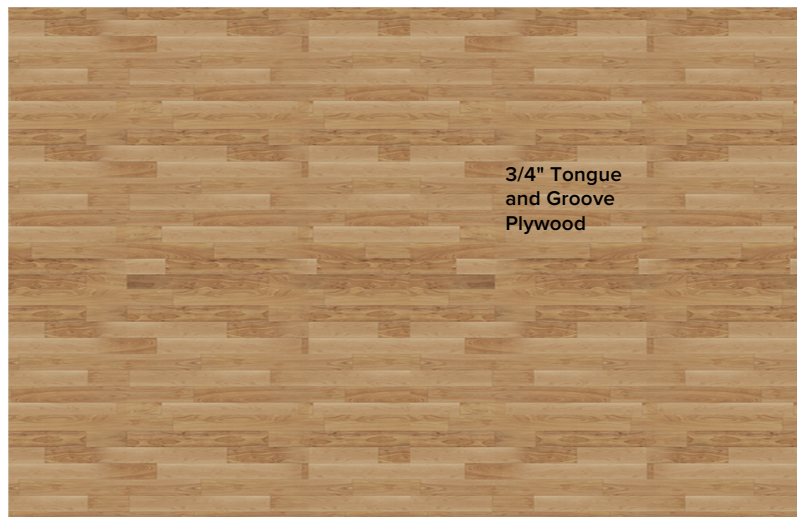
Use old doors and windows to save money. Follow manufacturer's instructions to accurately install the doors and windows.

## 2 FOUNDATION AND FLOOR

We will start this project by building the foundation. The foundation is to measure 14' x 20', and it will be made from eight 2x6 20' pressure-treated floor joists, two 2x6 14' pressure-treated rim joists, five pressure-treated 3x4 14' skids and nine sheets of 4' x 8' 0.75" tongue and groove plywood. Start the foundation by cutting two 2x6 14' rim joists and eight 2x6 19' 9" feet. Nail through the rim joists into the feet, using 3.5" galvanized nails. The floor joists should be spaced 22.23" apart. The skids should be spaced 4' 7.6" apart. After you have done this, your foundation should look like the top illustration. The last step is to install the floor decking. Measure and cut your tongue and groove plywood, and nail it into the frame vertically in sections (there should be 10 sections in total).



**FOUNDATION BASE**



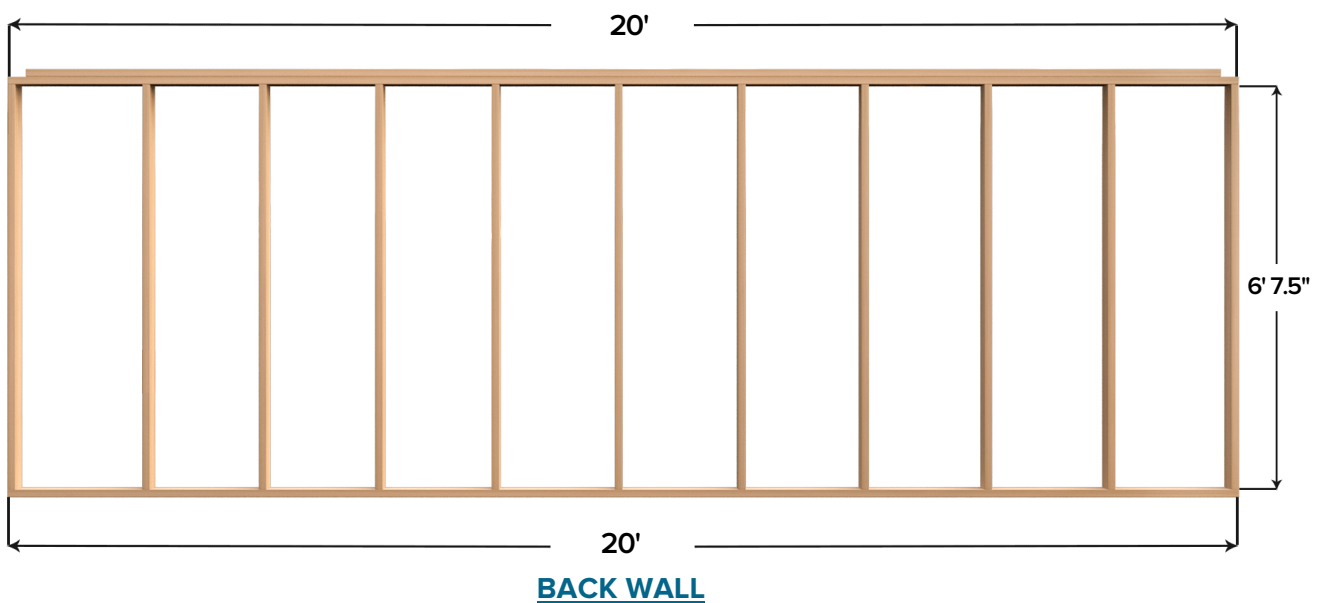
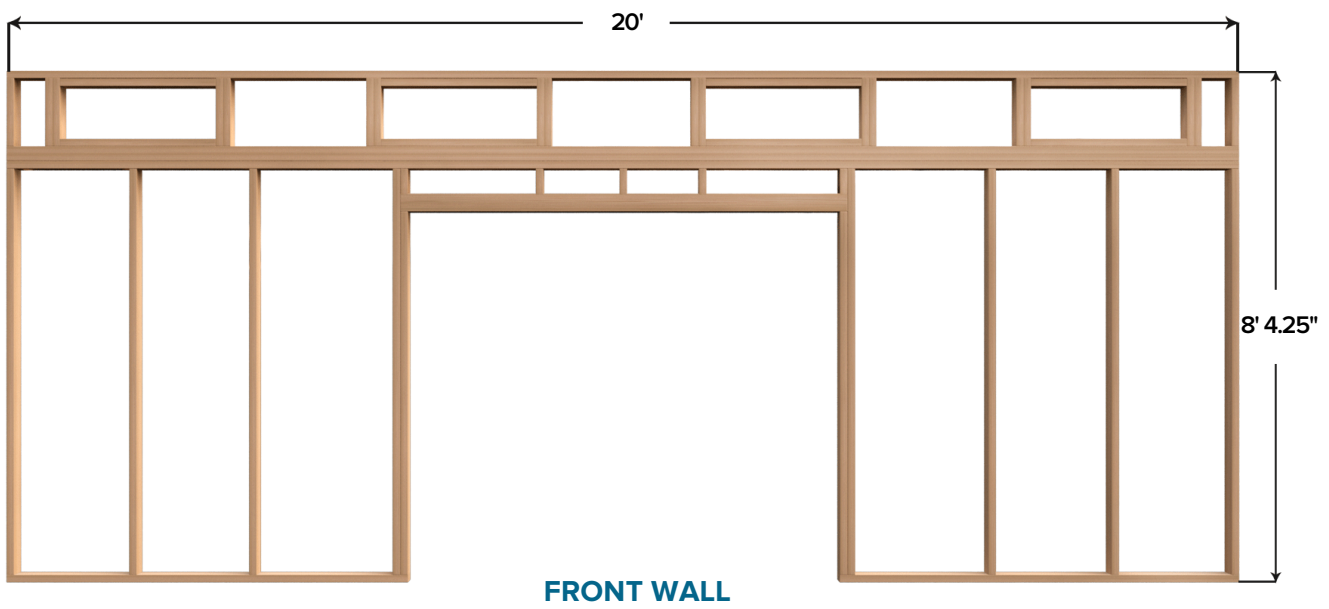
**FLOOR**

### NOTE

Buy per-designed joists and skids if you are new to building sheds. This way, you will reduce the chances of any complications in sizing and spacing.

### 3 WALL STRUCTURES

With your foundation built, we will move onto the front wall. The front wall is to be built with window cut outs and a garage door cut out. You will need twenty-four pieces of 2x4 lumbar to make the plates, wall studs, cripple studs, trimmer studs and headers. You will also need 5 sheets of 4x8 5/8" T1-11 siding to finish the wall off. You will start by cutting and framing the bottom and top plates, wall studs and trimmer studs. Nail through the bottom and top plates into the studs, until full assembled. Building the back wall is a less time-consuming task than the front wall. As you can see in the illustration, you will need to cut and frame a lot less lumbar. Start by cutting and framing the bottom and top plates, as well as the wall studs. Nail through the bottom and top plates into the studs, using 3.5" galvanized nails. Each stud should be spaced 22.5" apart, except for the outer studs, which should be spaced 22.125" apart.

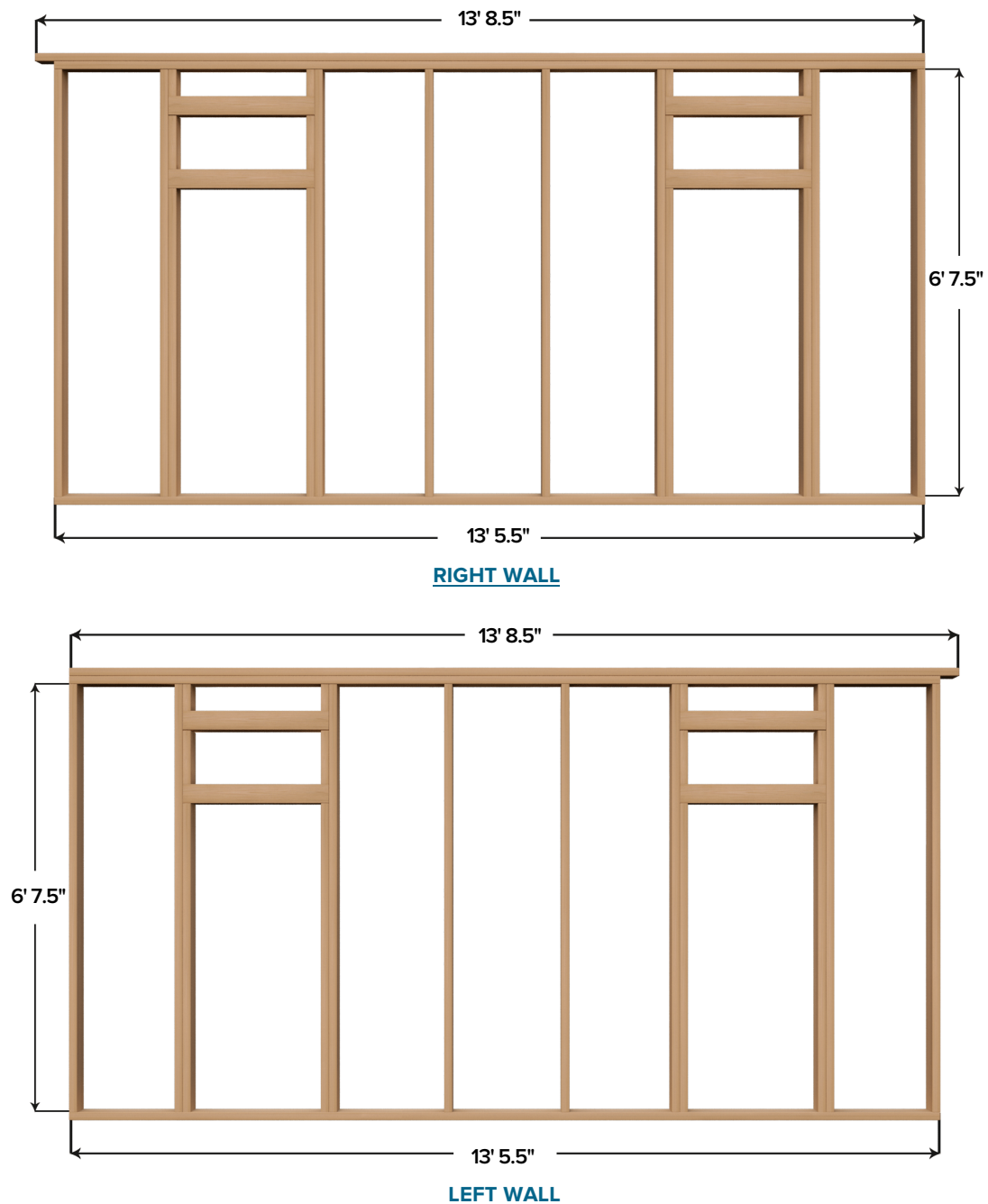


#### NOTE

Add self-adhering flashing on the bottom edges of the windows before installing T1-11.

## 4 WALL STRUCTURES

With your front and back wall built, we will move onto the right and left wall. These walls are identical to one another. Start by cutting and framing the bottom and top plates, and the wall studs. These walls will house two windows. You will cut and frame the cut outs for the windows with the rest of the wall. The window cut out should be 10" x 23", and there needs to be a 1' 8.5" distance between each centre wall stud. The distance between the two outer studs should be 1'6". The top plate should measure 13' 8.5", including overhang. To finish the left and right wall, measure and cut the T1-11 siding using the wall frames as your guide. The siding should run 1.5" past the bottom plate. It is also necessary to cut the siding at an angle at the top, to accommodate for the pitched roof. The angle you need, and all other details, can be found in our premium 14x20 shed plan.

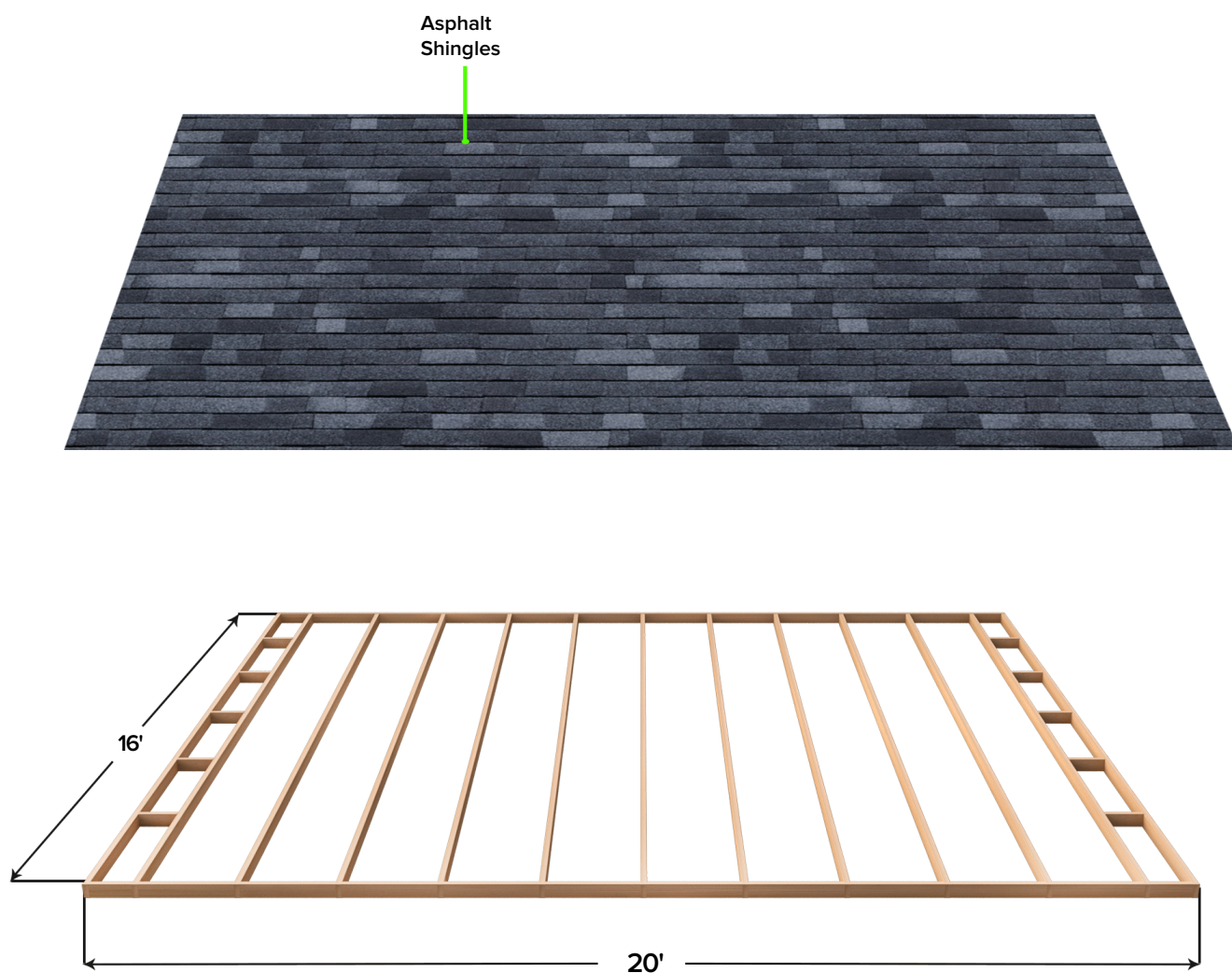


### NOTE

Make sure the edges of T1-11 do not overlap each other as this will compromise the functioning and appearance of the T1-11.

## 5 ROOF SECTION

With all four walls built, we will move onto the roof. The roof will be constructed using OSB sheathing, felt, starter shingles and shingles. But before we can build the roof up, it is first necessary to build the rafters, and the sub fascia. There will be 13 rafters in total including the outer rafters. Each rafter is 15' 8" long with a 30-degree miter cut on either end. Take a 16' 2x4 lumbar and cut it to size, cutting the ends of the rafter with a miter cut. When all 13 are built, it is necessary to cut out a birdsmouth on the frame. Details for this can be found in our premium 14x20 shed plan, together with all the measurements you need.



### NOTE

Follow the manufacturer's instructions carefully while installing the shingles. Get additional help for the roofing task to safely get the job done.



Supported & Recommended by our Friends & Partners:

wikiHow

MOVOTO

eHow

Sarah x Sarah

'BOUT HOME



**Wait no more! Click here to learn more about our premium 14'x20' shed plan and start building your shed today!**



### **PREMIUM PLAN INCLUDES:**

- 30+ detailed 3D schematics
- Views from all angles
- Measurements for every part
- Full layouts for every step
- Step-by-step assembly instructions
- Full material / shopping list
- Full cutting list
- PRO-TIPS for every section
- Mobile / Tablet ready
- Designed for newbies and pro's

**LEARN MORE!**